

## More information

### Electrical Safety Office

WorkSafe.qld.gov.au  
1300 362 128

### Ergon Energy

ergon.com.au  
13 74 66

### Energex

energex.com.au  
13 12 53

### Dial Before You Dig

1100.com.au

### Powerlink Queensland

powerlink.com.au  
1800 635 369

### Essential Energy

essentialenergy.com.au  
13 20 80



## Working safely as an arborist near powerlines

Working near powerlines can be fatal. Touching them or straying into the exclusion zone around them can result in a serious electric shock.



If you must work near powerlines, you should follow these three steps:

### 1. Develop a safe system of work before you start

- Identify overhead and underground powerlines by consulting maps and/or talking to the property owner and electrical entity.
- Conduct a site specific risk assessment – think about the type of plant and equipment/tools used, nature and size of loads being moved, site and weather conditions, type of work being done, and set-up and pack-up procedures.
- Put risk controls in place – the most effective way of controlling the risk is to de-energise the line for the duration of work where there is a risk of contact.
- Before work begins, ensure vegetation isn't hiding powerlines from view.

### 2. Keep your workers and contractors informed about electrical safety

- Induct and train your workers and contractors in safe work procedures, emergency procedures, and exclusion zones (*Figure 1*).
- Carefully plan the tasks to be completed near powerlines and work away from them whenever possible, not underneath them.

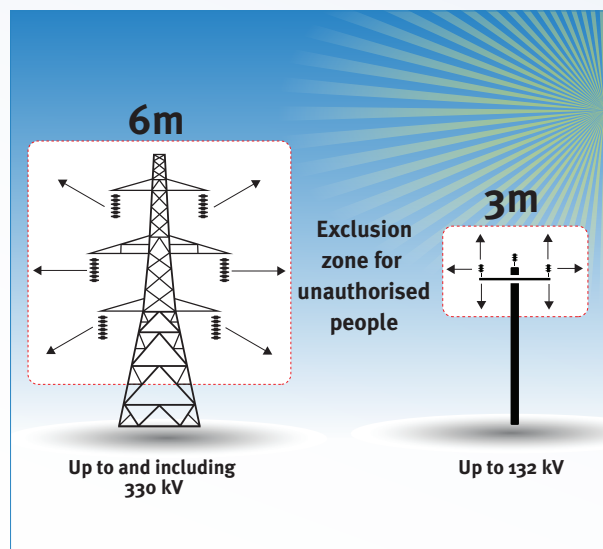


Figure 1.

- Show your workers the safe distance from an exclusion zone by marking it on the ground.
  - Ensure people are aware that powerlines sag or sway in hot or windy weather (*Figure 2*).
  - Long hand-held poles/equipment or cutting tools and elevating work platforms have the potential to enter an exclusion zone. Ensure your operators know the height and reach of equipment to be used.
- ### 3. Avoid going into exclusion zones
- Make powerlines and poles visible. Ask your electrical entity for permission to paint power poles and/or have them install markers or flags on the powerlines.
  - Plan your work so tree branches do not fall across powerlines.
  - Where possible, use insulated or non-conductive tools and equipment.
  - Operators should use a safety observer when raising their elevated work platform (EWP), and always lower it before relocating it.
  - A safety observer should monitor both the arborist's activity in the tree, as well as the ground crew, to ensure people and equipment stay out of exclusion zones.
  - Follow the safety advice you obtain from your electrical entity.

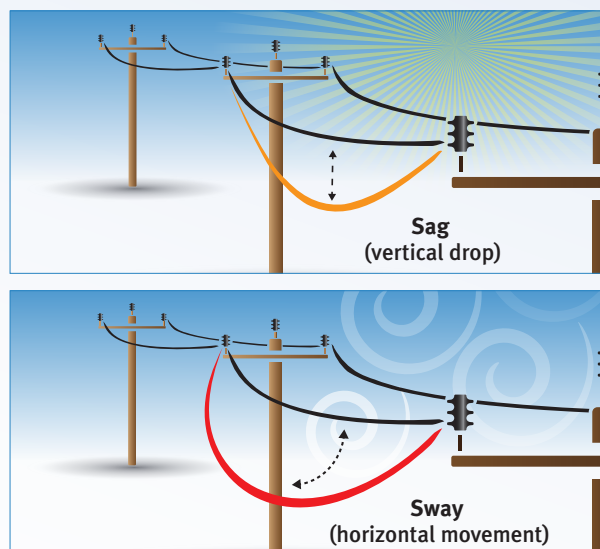


Figure 2.