

More information

Electrical Safety Office

WorkSafe.qld.gov.au
1300 362 128

Ergon Energy

ergon.com.au
13 74 66

Energex

energex.com.au
13 12 53

Dial Before You Dig

1100.com.au

Powerlink Queensland

powerlink.com.au
1800 635 369

Essential Energy

essentialenergy.com.au
13 20 80



Photo courtesy of Bishopp Billboard Constructions Pty Ltd.

Working safely on billboards near powerlines

Working near powerlines can be fatal. Touching them or straying into the exclusion zone around them can result in a serious electric shock.



If you must work near powerlines, you should follow these three steps:

1. Develop a safe system of work before you start

- Identify overhead and underground powerlines by consulting maps and/or talking to the property owner and electrical entity.
- Conduct a site specific risk assessment – think about the type of plant and equipment/tools used, nature and size of loads being moved, site and weather conditions, type of work being done, set-up and pack-up procedures.
- Put risk controls in place – the most effective way of controlling the risk is to de-energise the line for the duration of work where there is a risk of contact.
- Use good design principles and well maintained platforms and sail tracks to keep workers and contractors protected, and equipment out of exclusion zones.

2. Keep your workers and contractors informed about electrical safety

- Induct and train your workers and contractors in safe work procedures, emergency procedures, and exclusion zones (*Figure 1*).
- Carefully plan the tasks to be completed near powerlines and work away from them whenever possible, not underneath them.

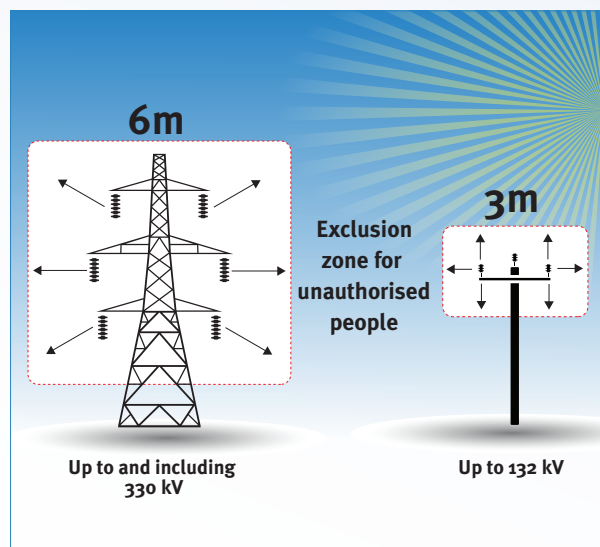


Figure 1.

- Show your workers the safe distance from an exclusion zone by marking it on the ground.
 - Ensure people are aware that powerlines sag or sway in hot or windy weather (*Figure 2*).
 - Tools used to apply billboard skins, workers accessing billboards, and elevating work platforms have the potential to enter the exclusion zone. Ensure your operators know the height and reach of equipment to be used.
- 3. Avoid going into exclusion zones**
- Make powerlines and poles visible. Ask your electrical entity for permission to paint power poles and/or have them install markers or flags on the powerlines.
 - If a billboard is in close proximity to overhead powerlines, work with the electrical entity to move lines away.
 - Where possible, use insulated or non-conductive tools and equipment.
 - Make sure the end of any equipment/tool being used is well clear of the exclusion zone.
 - Install warning signs at the top of the billboard to remind workers and contractors of the proximity of powerlines.
 - Follow the safety advice you are given by the electrical entity.

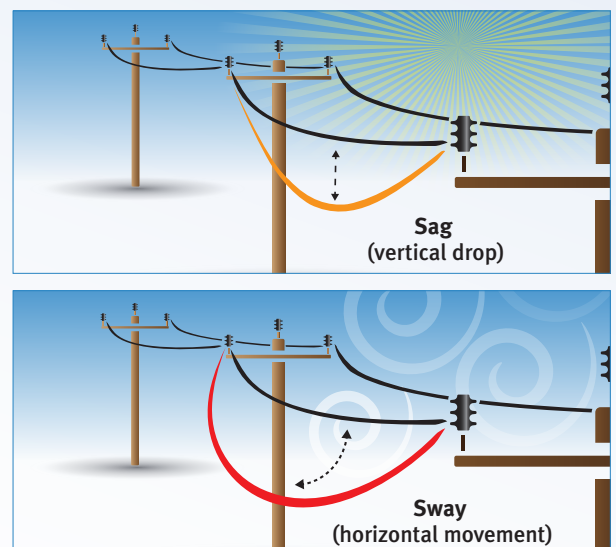


Figure 2.